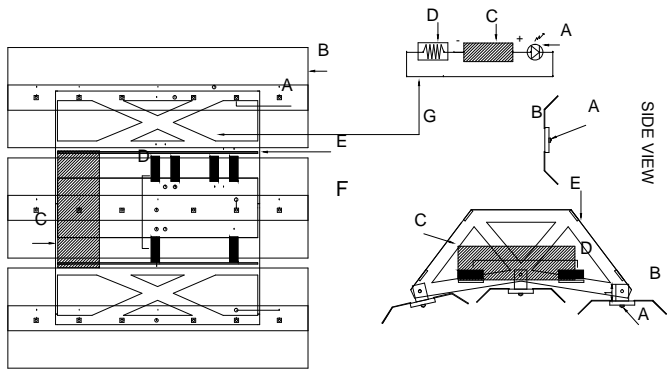
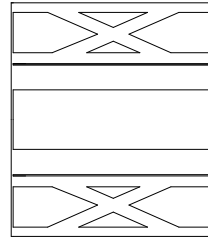


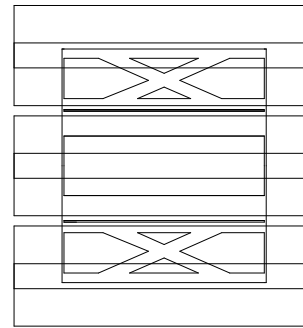
RTG three CEL growCEL.com



C.E.L. FRAME ASSEMBLY TOP VIEW

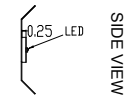
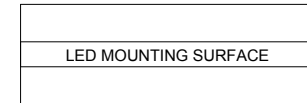


C.E.L. FRAME ASSEMBLY SIDE VIEW

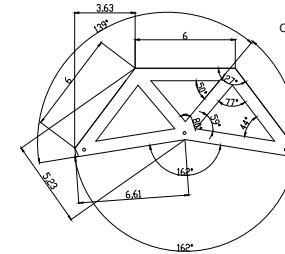


C.E.L. COMPLETE

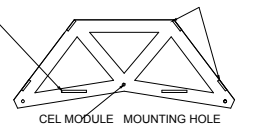
C.E.L. MODULE



SIDE VIEW

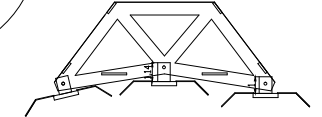


COMPONENT BAR END SIDE PANEL ENDS



CEL MODULE MOUNTING HOLE

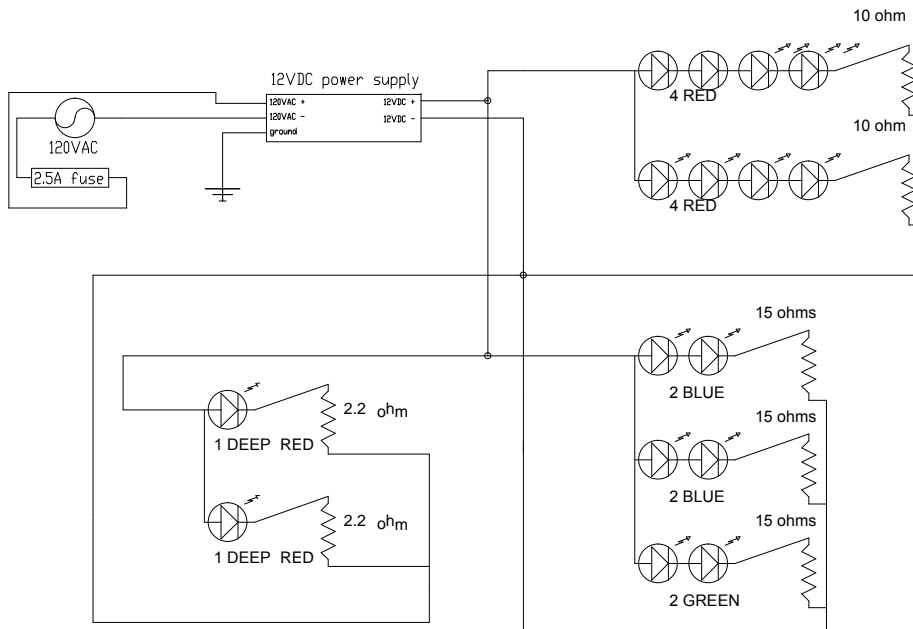
END TRUSS



C.E.L. FRAME ASSEMBLY END VIEW

BASIC ELECTRICAL HOOKUP DUPLICATE PER SYSTEM FOLLOW MANUFACTURES SPEC PER LED

Resistors are 10 watt wire wound ceramic mounted to chassis with thermal compound.
Blue and Green LEDs usually use the same value. Values for example only.



All components and metal to metal connections made with thermal compound.

hardware used is #8X32X1.5', #12 HEX SELF DRILL W/NEED WASHER 3/4", AND #8 PHIL MOD TRUSS, LATH SCREWS 9/16'

COOL EFFICIENT LIGHTING
BY: RICHARD TYLER GREENE JR
WWW.GROWCEL.COM

This work is licensed under the Creative Commons Attribution-Noncommercial-Share Alike 3.0 United States License. To view a copy of this license, visit <http://creativecommons.org/licenses/by-nc-sa/3.0/us/> or send a letter to Creative Commons, 171 Second Street, Suite 300, San Francisco, California, 94105, USA.