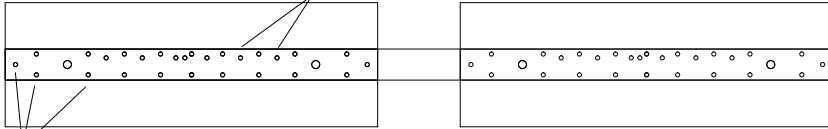


RTG six CEL growCEL.com

heatsink reflector module

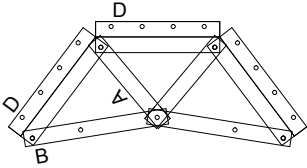
LED mounting hole



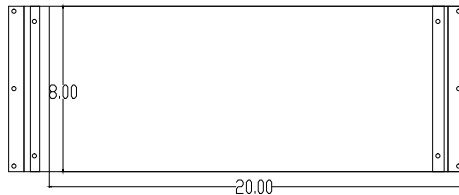
.032 reflector screwed to 1/8" bar

This work is licensed under the Creative Commons Attribution-Noncommercial-Share Alike 3.0 United States License. To view a copy of this license, visit <http://creativecommons.org/licenses/by-nc-sa/3.0/us/> or send a letter to Creative Commons, 171 Second Street, Suite 300, San Francisco, California, 94105, USA.

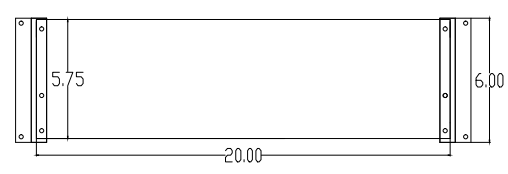
end truss assembly



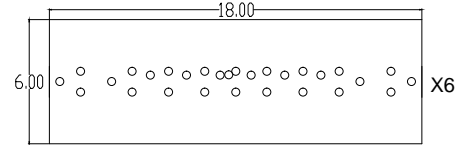
top panel assembly



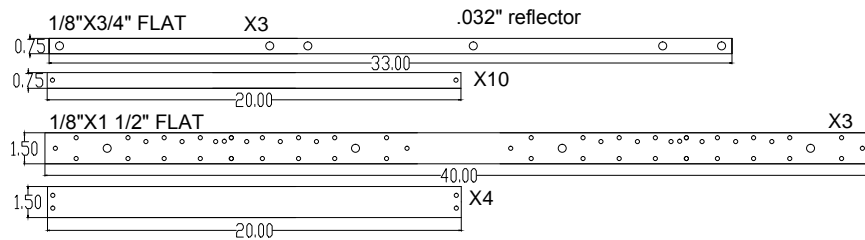
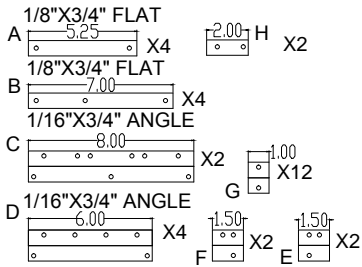
side panel assembly



all components and metal to metal connections made with thermal compound
all material is aluminum

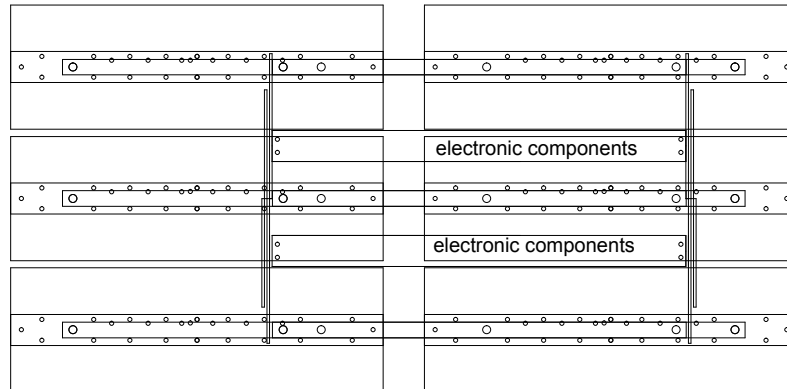
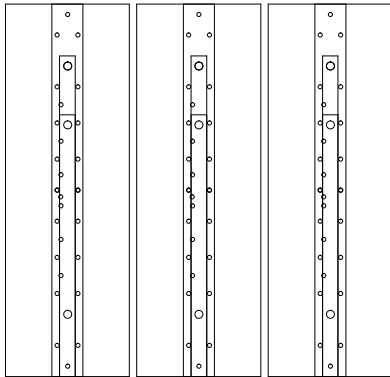


small holes are 1/8" large are 3/16"

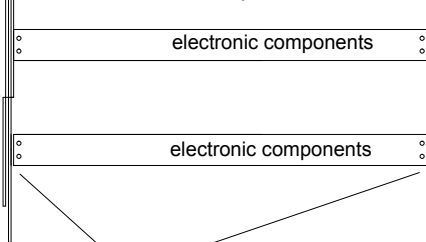


hardware used is #8X32X1.5", #12 HEX SELF DRILL W/NEO WASHER 3/4", AND #8 PHIL MOD TRUSS, LATH SCREWS 9/16"

heatsink reflector array assembly



bottom frame assembly



attach with angle E and F

attach reflector/heatsink LED module here with angle G and bar H in Center only.

COOL EFFICIENT
LIGHTING
BY: RICHARD TYLER
GREENE JR
WWW.GROWCEL.COM